

# FLANGE TYPE THERMOWELLS

## Technical Data

**Welded type:** WSF, WLF

**Drilled bar stock type:** BSF, BLF, BTF, BTLF, BPSF, BPLF

**Material:** SS304, SS316, SS316L, Monel, Hastelloy C 276, Brass, Carbon Steel, Titanium (special material available upon request)

**Process connection:** 1/2" ~ 4" flange available, flange rating—ANSI, DIN, JIS available (special flange upon request)

**Instrument connection:** 1/2" NPT, 3/4" NPT Female available (special thread upon request)

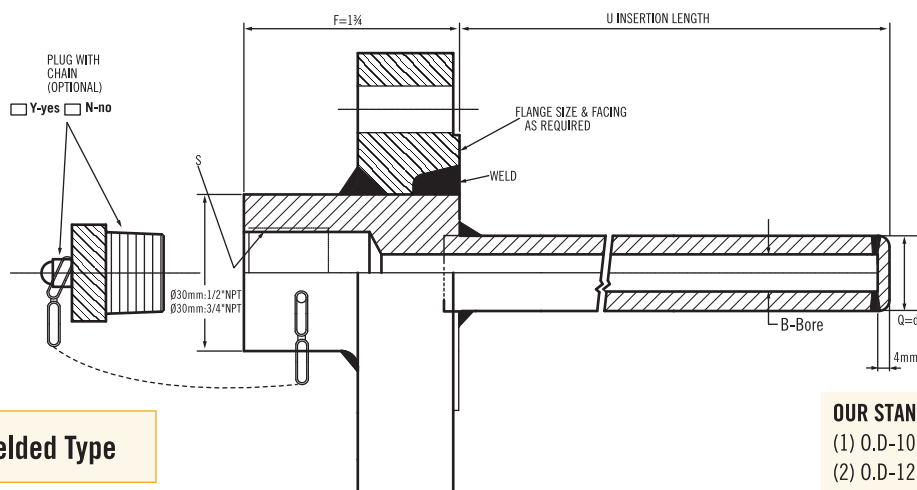


## Flange Wells Series

\* F: Length is suitable for flange size 3/4", 1", 1 1/2", 2", and flange rating 150# & 300#.

Other size and rating (F) length is by makers standard.

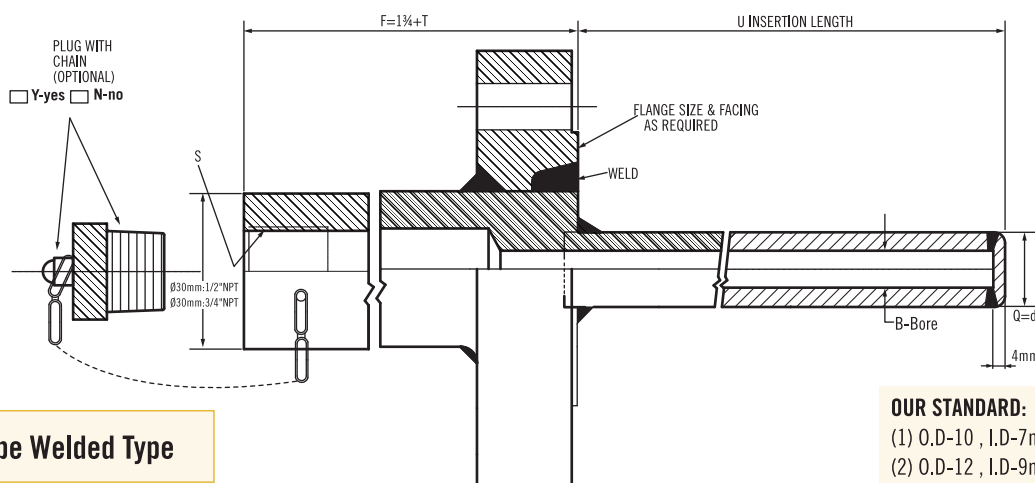
### Model : WSF(Welded Standard Flange Type)



Tube Welded Type

**OUR STANDARD:**  
 (1) O.D-10 , I.D-7mm  
 (2) O.D-12 , I.D-9mm  
 (3) O.D-14 , I.D-10mm  
**No custom request for this type!**

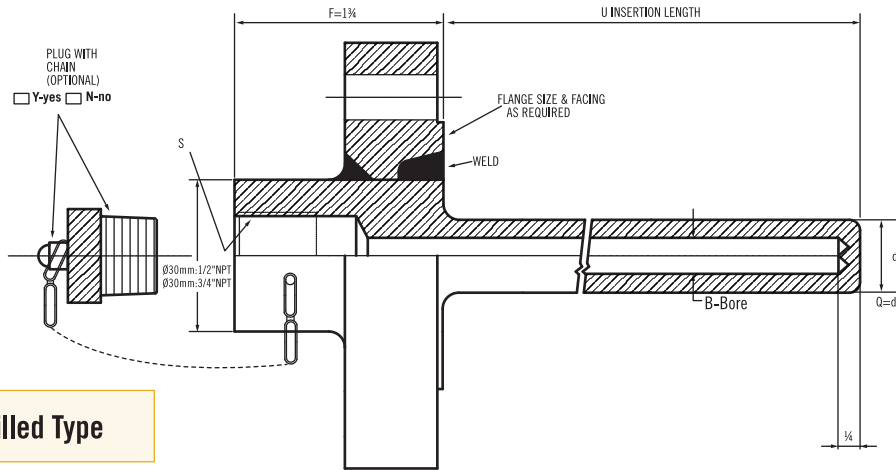
### Model : WLF(Welded Lag Flange Type)



Tube Welded Type

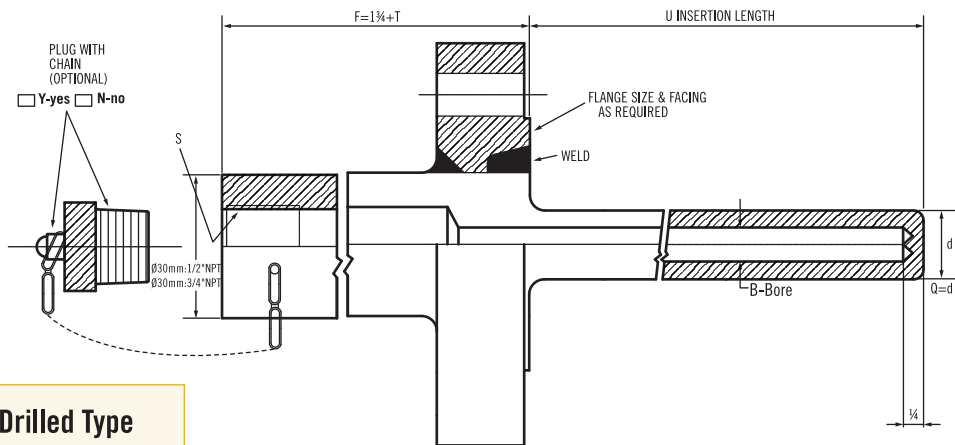
**OUR STANDARD:**  
 (1) O.D-10 , I.D-7mm  
 (2) O.D-12 , I.D-9mm  
 (3) O.D-14 , I.D-10mm  
**No custom request for this type!**

## Model : BSF(Straight Standard Flange Type)



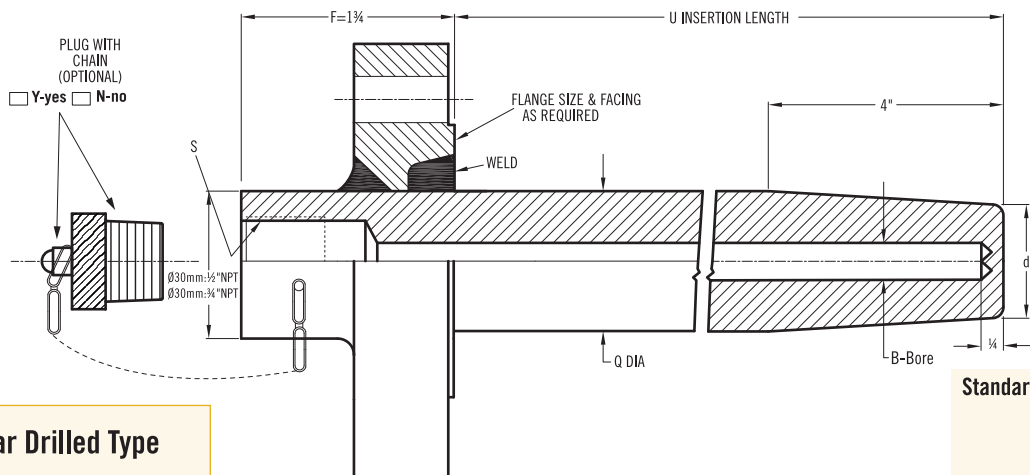
Bar Drilled Type

## Model : BLF(Straight Lag Extension Flange Type)



Bar Drilled Type

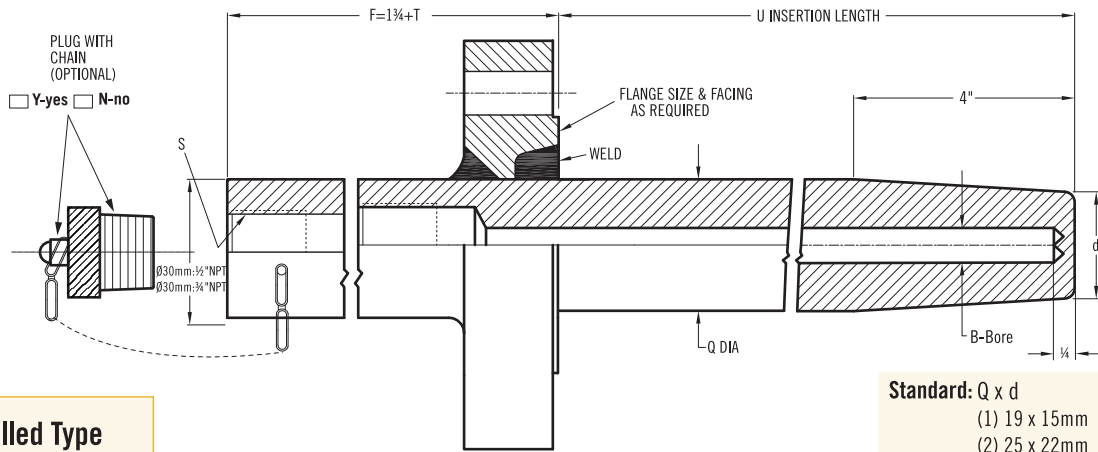
## Model : BTF(Tapered Standard Flange Type)



Bar Drilled Type

Standard: Q x d  
 (1) 19 x 15mm  
 (2) 25 x 22mm  
 (3) 22 x 19mm

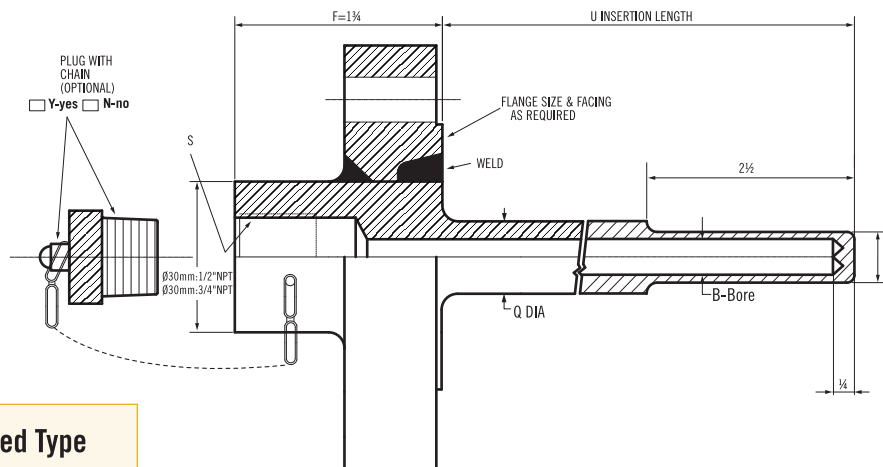
Model : BTLF(Tapered Lag Extension Flange Type)



Bar Drilled Type

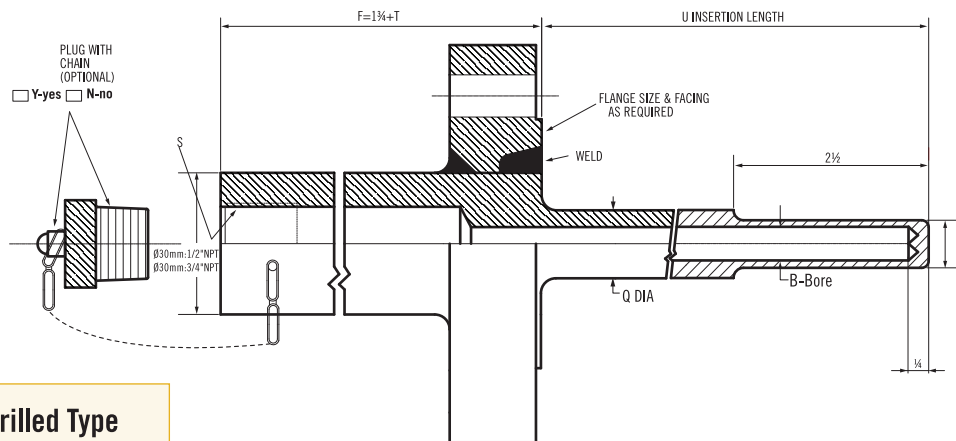
Standard: Q x d  
 (1) 19 x 15mm  
 (2) 25 x 22mm  
 (3) 22 x 19mm

Model : BPSF(Stepped Standard Flange Type)



Bar Drilled Type

Model : BPLF(Stepped Lag Extension Flange Type)



Bar Drilled Type

## Ordering Information

Model	Configuration Style									
	WSF	WLF	BSF	BLF	BTF	BTLF	BPSF	BPLF		
<div style="display: flex; justify-content: space-between; width: 100%;"> <div style="width: 12.5%; text-align: center;">↓</div> <div style="width: 12.5%; text-align: center;">↓</div> <div style="width: 12.5%; text-align: center;">↓</div> <div style="width: 12.5%; text-align: center;">↓</div> <div style="width: 12.5%; text-align: center;">↓</div> <div style="width: 12.5%; text-align: center;">↓</div> <div style="width: 12.5%; text-align: center;">↓</div> <div style="width: 12.5%; text-align: center;">↓</div> <div style="width: 12.5%; text-align: center;">↓</div> <div style="width: 12.5%; text-align: center;">↓</div> <div style="width: 12.5%; text-align: center;">↓</div> <div style="width: 12.5%; text-align: center;">↓</div> <div style="width: 12.5%; text-align: center;">↓</div> <div style="width: 12.5%; text-align: center;">↓</div> <div style="width: 12.5%; text-align: center;">↓</div> </div>	<b>Code</b> <b>Material</b>									
	CS	Carbon Steel		MO	Monel					
	S1	304 Stainless Steel		HC	Hastelloy C276					
	S2	316 Stainless Steel		Ti	Titanium					
	S3	316L Stainless Steel		OP	Option (please indicate material)					
	<b>Code</b>		<b>Process Flange Size</b>							
			(1) ½" (2) ¾" (3) 1" (4) 1½" (5) 2" (6) 2½" (7) 3" (8) 4" (9) option (please indicate size)							
	<b>Code</b>		<b>Flange Rating</b>							
	A	150#	E	1500#	I	PN25	M	JIS20K		
	B	300#	F	2500#	J	PN40	O	option		
	C	600#	G	PN10	K	JIS5K				
	D	900#	H	PN16	L	JIS10K				
	<b>Code</b>		<b>S-Instrument Connection</b>							
			(A) ½"NPT Female (B) ¾"NPT Female (O) option							
	<b>Code</b>		<b>Lag Length "T"</b>							
No	0	T6	6"							
T3	3"	Tn	option (please indicate length)							
<b>Code</b>		<b>"Q" Diameter (mm)</b>								
		Please directly fill in the required diameter.								
<b>Code</b>		<b>"d" Diameter (mm)</b>								
		Please directly fill in the required diameter.								
<b>Code</b>		<b>"B" BORE diameter</b>								
		(1) ∅6 (2) ∅7 (3) ∅8 (4) ∅9 (5) ∅10 (O) option								
<b>Code</b>		<b>"U" Insertion Length</b>								
		Fill in the requested length: e.g. 300mm=300u								
<b>Code</b>		<b>Plug with Chain</b>								
Y		Yes								
N		No								
									<b>Complete Ordering Code</b>	